

Empco Barge Lights

1



MARINE DIVISION OF ELGIN MOLDED PLASTICS INC.

LED NAVIGATIONAL BARGE LIGHTS



MODEL 200 MB LED LIGHT SYSTEMS

- Capable of operating on 1 to 4 spring-type batteries
- External stainless-steel hardware throughout
- Top Case & Name Plate Color Coded for ease in installation
- Up to 30 days sidelight usage with HDM spring type batteries
- Up to 160 days special flashing light usage with HDM spring type batteries



Empco Barge Lights



All Round Light/ Anchor Light

Have confidence and peace of mind with the Empco-Lite All Round Light/Anchor Light. This light will meet the latest U.S.C.G. standards*. Its high quality will serve you well.



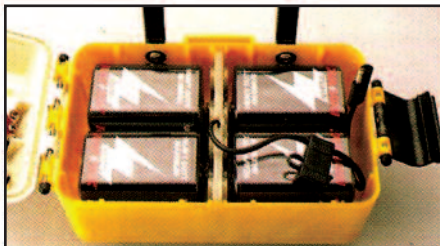
Pilot Location Light

On long tows, do you have trouble seeing where the front of the tow is and directing your barges? Our blue PLL light will give you the reference point that you need. The light comes standard with a velcro strap to make attaching it to a pole simple.

1

Exceeds U. S. Coast Guard Specifications

- Visibility exceeds 3 nautical miles for vessels 50 meters or more in length
- Special Flashing Light 2 nautical miles
- Optically-correct lenses for the “ultimate” in photometrics
- Lens has built-in screens for each light application



Battery

- Spring-type batteries may be installed regardless of polarity (patented) Spring-type battery # Ray-O-Vac 6VHDM (recommended)
- Red battery indicator light tells when the voltage is low

Standard Features:

- Built in nuts for magnet mounting
- Magnets (70 lb. pull)
- Battery retaining brackets
- Low voltage indicator light

Circuitry:

- Battery connector cables fused, prevents fire hazard, damage to circuitry or battery
- LED bulbs over 10,000 hour life span
- Daylight check of operating lamp - simply cover the photo cell with a hand and the light will operate

Housing:

- Military-type external switch
- Case bottom may be equipped with 2-70 lb. pull magnets (depending on usage, magnets may be easily removed)
- Case fully gasketed to prevent water damage
- Case bottom and top have a positive snap action latch assembly

Dimensions:

- 11” L x 9-1/2” H x 6” W
- 5.14 lbs without battery

*Meets UL 1104-Sec. 4-33, Tested by Calcoast ITL